

*cryo***SPHERE**[®]
Provides Temporary
Post-Operative Pain Relief



**The Coolest Innovation
in Pain Management.**

AtriCure

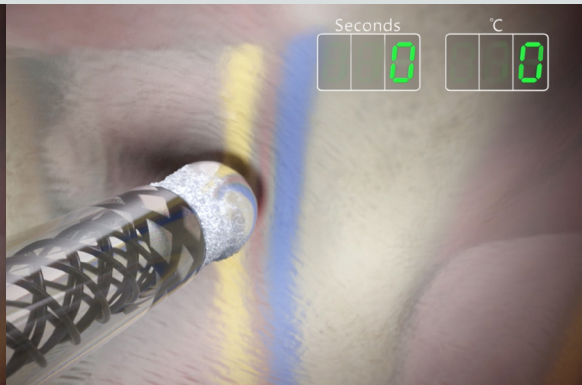
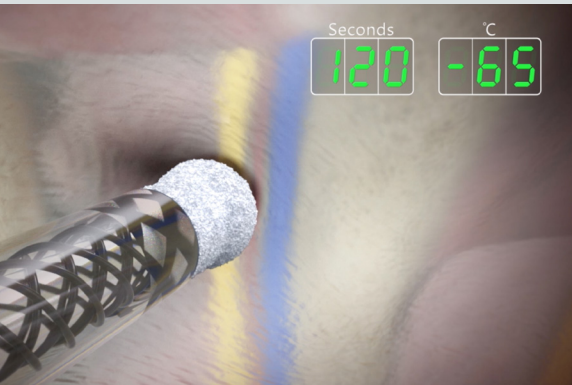
A NEW WAY TO FREEZE OUT POST-OPERATIVE PAIN.

Cryo Nerve Block (cryoNB) harnesses the power of cryotherapy to provide a new form of temporary pain relief for patients who undergo certain invasive cardiac or thoracic surgical procedures. This technology uses a unique freezing method to temporarily block pain signals from nerves in the affected area, providing an effect that's similar to a local anesthetic.

HOW cryoNB WORKS.

1 / FREEZING THE NERVE

A surgical probe delivers extremely cold temperature to nerve tissue in the nerves around the surgical incision.



2 / STOPPING THE PAIN SIGNALS

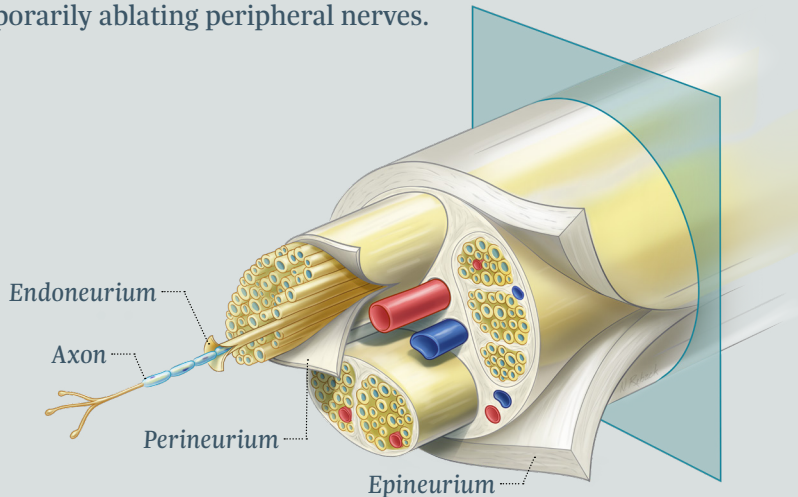
Freezing blocks pain signals, which originate from a structure within the nerve called the axon. The axons subsequently degenerate while leaving the tubule structures (epineurium, perineurium, endoneurium) intact for the axons to regenerate within.

3 / REGENERATION AND RECOVERY

CryoNB blocks post-surgical pain for around one to three months, while allowing the axons to regenerate. Patients will typically experience numbness around the surgical incision during this time. Following regeneration, normal nerve function resumes.

A NEW APPLICATION FOR A PROVEN TECHNOLOGY.

Cryotherapy was originally developed as a treatment for cardiac arrhythmias. AtriCure consulted with leading pain management experts to develop new techniques for applying cryoNB to nerves, specifically in order to block pain. AtriCure's cryoICE cryoSPHERE cryoablation probes are sterile, single use devices intended for use in blocking pain by temporarily ablating peripheral nerves.



ATRICURE, INC.

7555 Innovation Way
Mason, Ohio 45040
+1 (513) 755-4100
+1 (888) 347-6403

Customer Service / Product Inquiries

Phone: +1 (866) 349-2342

Fax: +1 (513) 755-4567

PM-US-0017D-0924-G

U.S Indications for Use:

For Adult Patients

AtriCure's cryoICE cryoSPHERE cryoablation probes are sterile, single use devices intended for use performed by freezing target tissues, creating an inflammatory response (cryonecrosis) for blocking pain by temporarily ablating peripheral nerves.

For Adolescent Patients

The cryoICE cryoSPHERE cryoablation probes are intended for use to temporarily block pain by ablating intercostal nerves under direct visualization¹ in adolescent patients of at least 12 years of age.

¹Direct visualization, in this context, requires that the surgeon is able to see the targeted tissue for cryoablation directly or with assistance from a camera, endoscope or other similar optical technology.

Please review the Instructions for Use for a complete listing of contraindications, warnings, precautions and potential adverse events prior to using these devices.

Talk to your healthcare provider if you have questions.

Rx Only.

AtriCure